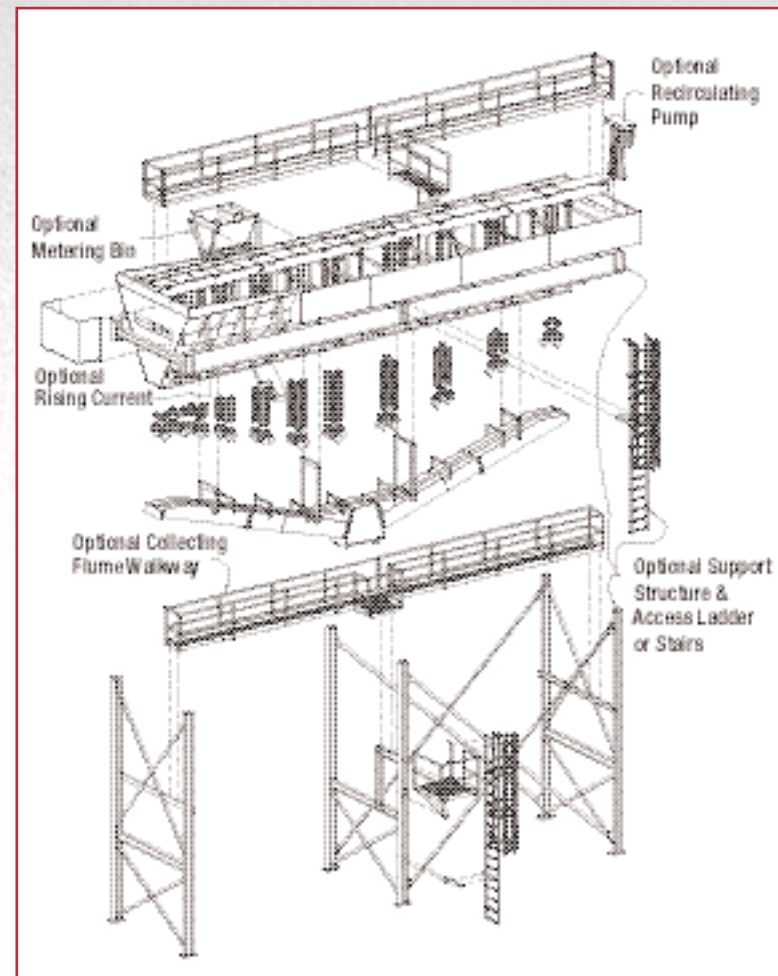


Aggre-Spec™ Classifying Systems

Optional Equipment

- Control Cable Lengths
- Rising Current
- Metering Bins
- Collecting Flume Area Walkway
- Custom Support Structures
- Skid Base for Semi-Portable Units
- Conveyors
- Screens
- Remote Controls



Produce More Spec Sand...

Individual Equipment To Complete Customized Washing & Classifying Operations

At GreyStone, we have the industry's most experienced people in washing & classifying application solutions, systems & controls engineering and field service. And, when we combine this depth of experience with the most complete, proven product line in the business, your challenges quickly become opportunities.

Portable & Semi-Portable Washing/Screening Plants
Single & Twin Fine Material Dewatering Screws
Single & Twin Coarse Material Washers
Logwashers
Sand Classification Tanks & Systems

Advanced Computer Control Systems
Portable Sand Plants
Water Clarifiers
Rotary & Vibrating Screens
Portable Conveyors & Radial Stackers

Blade Mills
Portable Screening Plants
Twin Jets
Cutter Heads
Aggregate Reclaiming Systems

888-346-WASH

One Company. One Focus. Great Results.

GreyStone

3330 E. 23rd Street, PO Box 904, Columbus, NE 68602

Phone: 402-564-9505 • Toll-Free: 888-346-WASH • Fax: 402-564-6694 • www.greystoneinc.com • grystone@megavision.com

© Copyright 2002 GreyStone, Inc. All rights reserved.

With the industry's most advanced classifying systems and controls.

GreyStone

Aggre-Spec™ Classifying Systems
Stationary, Semi-Portable & Portable

GreyStone Classifying Tanks & Specifications

All GreyStone Classifiers Feature:

- Stainless steel hydraulic lines and cylinder rods
- Shut-off valves on the pressure line at each station
- All ASTM A-36 certified structural steel construction
- "Off-the-shelf" material level sensors
- Urethane valves, seats and discharge elbows
- 5 HP high-pressure, hydraulic power pack
- Abrasion-resistant or urethane-lined collecting blending flume
- Valve bridge walkway with handrails and toe boards
- Adjustable weir plates

Classifier Size	No. Of Stations	No. Of Cells	Capacities Maximum Gallons Per Minute Overflow for Various Retention of Fines			Estimated Weight
			100M	150M	200M	
8' x 20'	6	3	2300	1200	700	12,000
8' x 24'	7	3	2800	1400	800	14,000
8' x 28'	8	3	3200	1600	900	16,000
8' x 32'	9	3	3500	1800	950	18,000
10' x 24'	7	3	3500	1800	950	18,000
10' x 28'	8	3	4100	2100	1100	20,000
10' x 32'	9	3	4700	2400	1250	24,000
10' x 36'	10	3	5300	2700	1400	28,000
10' x 40'	11	3	5900	3000	1500	30,000
12' x 48'	11	3	8100	4200	2150	44,000

Note: Sand not classified if operating in shaded area

Stationary

Choose from 10 classifier models with up to 11 stations capable of handling up to 4,200 gallons per minute.

Additional Features:

- Optional support structures and screen towers designed for your applications

Classifier Size	Screw Size	No. Of Stations	Screw Capacity TPH	Estimated Weight
8' x 24'	Twin 36" x 25' E	7	200	40,000
8' x 28'	Twin 36" x 25' E	8	200	42,000
8' x 32'	Twin 36" x 25' E	9	200	48,500
10' x 24'	Twin 36" x 25' E	7	200	50,000
10' x 28'	Twin 36" x 25' E	8	200	51,000
10' x 32'	Twin 36" x 25' E	9	200	51,500
10' x 36'	Twin 36" x 25' E	10	200	58,500
10' x 40'	Twin 36" x 25' E	11	200	63,000
8' x 32'	Twin 44" x 32'	9	350	60,000
10' x 32'	Twin 44" x 32'	9	350	64,500
10' x 36'	Twin 44" x 32'	10	350	67,000
10' x 40'	Twin 44" x 32'	11	350	68,000
10' x 40'	Twin 54" x 35'	11	480	97,000
10' x 40'	Twin 66" x 35'	11	720	132,000
12' x 48'	Twin 44" x 32'	11	350	91,000
12' x 48'	Twin 54" x 35'	11	480	116,000
12' x 48'	Twin 66" x 35'	11	720	150,000
12' x 48'	Twin 72" x 35'	11	820	175,000

Note: See stationary capacity chart for water capacity



Semi-Portable

Choose from 18 classifier models with up to 11 stations capable of producing up to 820 TPH.

Additional Features:

- Modular, low-profile construction
- Stack-up design for quick installation
- Motor controls, water piping and control cables
- Walks, rails and ladders
- Optional skid base
- Retractable valve bridge for travel

Classifier Size	Screw Size	No. Of Stations	Screw Capacity TPH	Estimated Weight
8' x 24'	Twin 36" x 25' E	7	200	50,000
8' x 28'	Twin 36" x 25' E	8	200	51,000
8' x 32'	Twin 36" x 25' E	9	200	52,000
8' x 32'	Twin 44" x 32'	9	350	73,500
*10' x 28'	Twin 44" x 32'	8	350	81,000
*10' x 32'	Twin 44" x 32'	9	350	86,000
*10' x 36'	Twin 44" x 32'	10	350	88,000
*10' x 40'	Twin 44" x 32'	11	350	95,000

Note: See stationary capacity chart for water capacity

* Classifiers must be removed for travel

Portable

Choose from 8 classifier models with up to 11 stations capable of producing up to 350 TPH.

Additional Features:

- Fully portable, low-profile design for quick teardown & setup
- Motor controls, water piping and control cables
- Walks, rails and ladders
- Retractable valve bridge for travel
- Tandem or triple axle design
- Screw-type or hydraulic leveling jacks

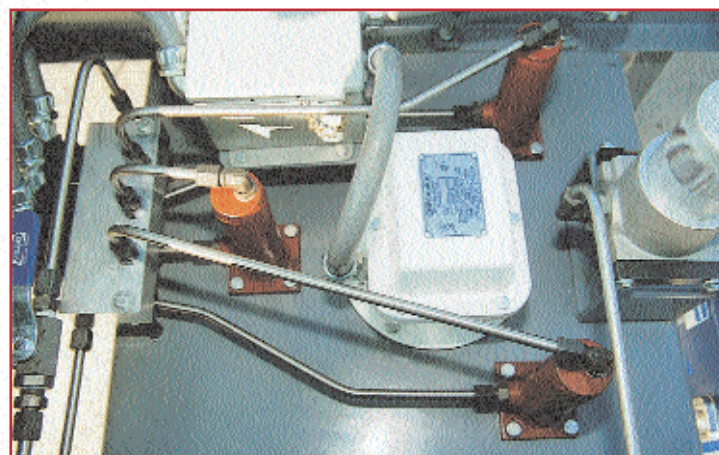


Aggre-Spec™ I And Aggre-Spec™ II Sand Re-Blending Control Systems

Aggre-Spec™ I & II Sand Re-Blending Control Systems allow producers to make up to 10 different recipes of two products, totaling 20 different products. Aggre-Spec controllers are mounted in a NEMA 12-rated enclosure that houses an Allen-Bradley programmable logic controller (PLC) and keypad interface for inputting settings.

With Aggre-Spec I & II, producers receive:

- Automatic programmable tank clean-out
- Multiple recipes
- Valve “open” indicator lights
- Manual “open” individual valve switches
- Alarm history



View of hydraulic cylinder

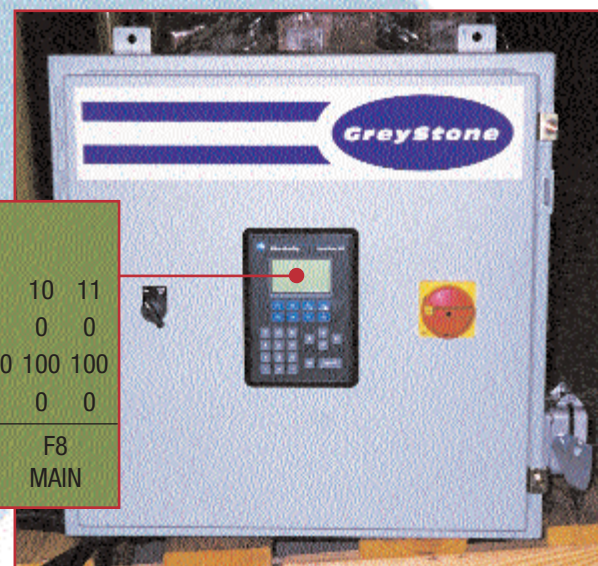
Aggre-Spec I

GreyStone's Aggre-Spec I Sand Re-Blending Control System allows producers to maintain specifications by diverting excess fractions on a “percentage” basis from the individual stations of the classifier.

Features Include:

- 10 recipes of two products for a 20-product capability
- A programmable cycle timer
- Independently operating stations

		VIEW %										
		1	2	3	4	5	6	7	8	9	10	11
A		100	100	100	50	50	50	50	0	0	0	0
B		0	0	0	50	50	50	50	100	100	100	100
C		0	0	0	0	0	0	0	0	0	0	0
F5		F6 C-0			F7 GEN			F8				
RECIPE		CONFIG			CONFIG			MAIN				



Aggre-Spec II

GreyStone's Aggre-Spec II Sand Re-Blending Control System allows producers to maintain specifications by diverting excess fractions from the incoming feed material by setting minimum and maximum timer settings of the classifier's individual stations, “batching” the finished product specifications.

Features Include:

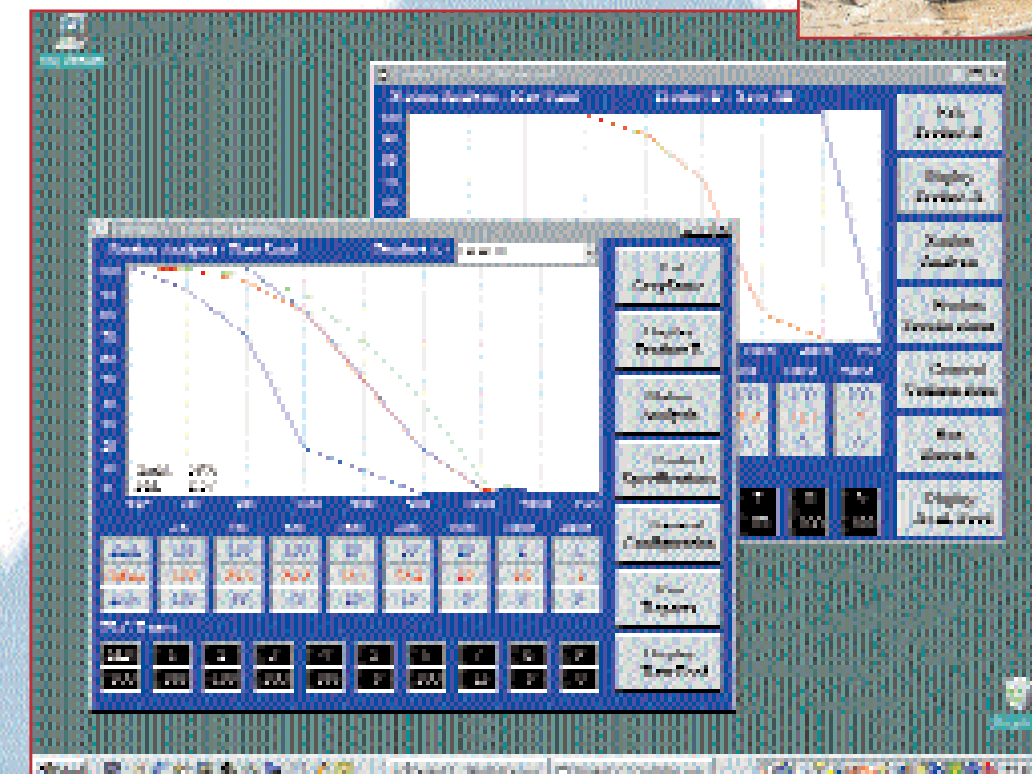
- 10 recipes of two products for a 20-product capability
- Minimum/maximum time setting for each valve
- Production monitoring of all stations
- “End of Cycle” alarm
- Ratio control of material flowing within a station to valve A and B intermittently
- Station overrides
- Production history log of each valve at each station

		VIEW BATCH STATUS						
		ACTUAL	MIN A	MAX B	ACTUAL	MIN B	MAX B	
1		25	50	100	0	0	0	
2		15	31	62	0	0	0	
3		10	36	72	0	0	0	
4		23	45	90	11	45	90	
5		14	29	58	7	29	58	
6		11	22	44	5	22	44	
7		14	28	56	7	28	56	
8		6	12	24	3	12	24	
9		5	0	25	2	0	25	
10		5	0	25	2	0	25	
11		3	0	25	1	0	25	
F6 RESET A		F7 RESET B		F9 ALARMS		F10 VIEW		



Increase Production With Windows®-Based Aggre-Spec™ III

The Aggre-Spec™ III Computer-Aided Sand Re-Blending System features a patented, 3-method control system that delivers much higher productivity than single-method programs. This exclusive GreyStone program automatically selects the most efficient process for re-blending up to 3 products, including 2 spec products simultaneously. The user-friendly Aggre-Spec III allows multi-tasking with other Windows-based programs. Aggre-Spec III is available for all GreyStone classifier models and can be retrofitted to most existing classifying systems from other manufacturers.



Re-blend up to 2 spec products at one time and view both products on the screen at the same time with Aggre-Spec III, the industry's only Windows-based control system.

Gain Unmatched Efficiency with Aggre-Spec III

Features Include:

- Patented, 3-method, re-blending system delivers up to 15% more productivity than single-method programs
- Simple, “single-step” product spec changes eliminate wasted time searching for hidden keys
- Automatically monitors feed material to warn the operator of potential product mix or mechanical problems
- Holds to tight product specifications and reduces the possibility of out-of-spec material
- Unlimited mix design storage capacity
- Multi-tasking capabilities with other Windows-based programs while re-blending spec sand products
- Easy calibration
- Percentage retained or passing display options
- Customizable sieve series
- Flow WatchDog™
- Specification Modification on main screen, avoiding multiple views
- Station overrides
- Automatic cleanout routine can be programmed by user
- Factory field training and initial calibration included