



# ELECTRO-MAGNETS

## Self-Cleaning / Stationary

Engineers and Manufacturers of Washing, Vibrating and Crushing Equipment

### Description

Trio's air-cooled, self-cleaning **Electro-Magnets** are suspended overhead magnets designed for removing steel and other magnetic materials from aggregate, recyclable, and other materials during the crushing, screening and sorting processes.

A conveyor belt travels around the magnet and carries the material that is drawn upward, away and into collecting hoppers or onto the ground.

These units are typically installed either in-line with corresponding conveyors (as shown in top right photo), or in a cross-belt configuration (90° across the conveyor belt). They are ideal devices for removing both small and large metallic debris from crushed aggregate and recycled material. Their air-cooled design was developed for long-term, trouble free operation.



### Applications

- Mixed Demolition Debris
- Crushed or Broken Concrete
- Hard Rock Crushing
- Mixed Solids at MRF Facilities
- Shredded Tires
- Organic Composting

### Models/Sizes

- | Self-Cleaning      | Stationary          |
|--------------------|---------------------|
| - CR36 — 36" x 42" | - CRS36 — 36" x 42" |
| - CR42 — 42" x 48" | - CRS42 — 42" x 48" |
| - CR48 — 48" x 54" | - CRS48 — 48" x 54" |
| - CR54 — 54" x 60" | - CRS54 — 54" x 60" |

### Other Considerations

- One Year Warranty
- Quick Deliveries
- Off-the-shelf parts
- Nationwide distribution
- Superior Quality
- Low Price Guarantee

### Specifications

- Magnets equipped with heavy steel side plates
- Solid steel core
- Variable strengths and wattage depending on magnet size
- Screw take-ups on tail pulley
- Lagged head pulley
- Wound coils w/class H insulation
- Two year warranty against magnetic coil burnout
- NEMA 4 Terminal box
- 150 FPM belt speed (variable)
- Oil-based paint
- Stainless steel armored belting
- Four pulley design



Distributed by:



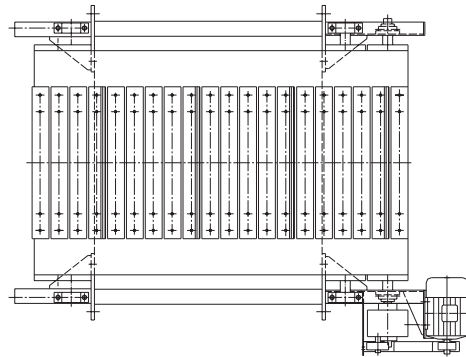
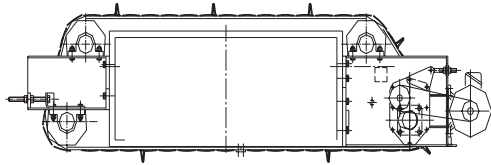
Trio Engineered Products, Inc. 128 Schabarum Avenue • Irwindale, CA 91706  
Ph: (626) 851-3966 • Fx: (626) 851-9526 Web: [www.trioproducts.com](http://www.trioproducts.com) Email: [info@trioproducts.com](mailto:info@trioproducts.com)



# ELECTRO-MAGNETS

## Self-Cleaning / Stationary

Engineers and Manufacturers of Washing, Vibrating and Crushing Equipment



### Self-Cleaning Electro Magnets

| Model | Magnet Size | Distance For 1/2" Nut | Power (watts) | Magnetic Intensity (gs) | Height (in) (mm) |     | Belt Speed (fpm) | Motor Size (hp) (kw) |   | Weight (lbs) (kg) |      |
|-------|-------------|-----------------------|---------------|-------------------------|------------------|-----|------------------|----------------------|---|-------------------|------|
| CR 36 | 36" x 42"   | 20"                   | 5,400         | 760 @12"                | 20"              | 508 | 300              | 5                    | 5 | 5,800             | 2600 |
| CR 42 | 42" x 48"   | 20"                   | 6,500         | 860 @12"                | 23"              | 584 | 300              | 5                    | 5 | 6,200             | 2800 |
| CR 48 | 48" x 54"   | 20"                   | 8,400         | 960 @12"                | 24"              | 609 | 300              | 5                    | 5 | 7,200             | 3300 |
| CR 54 | 54" x 60"   | 20"                   | 10,000        | 1,080 @12"              | 26"              | 660 | 300              | 5                    | 5 | 8,800             | 4000 |

### Dimensions

| Model / Dimension |       | A (in) (mm) |      | B (in) (mm) |      | C (in) (mm) |     |
|-------------------|-------|-------------|------|-------------|------|-------------|-----|
| CR36              | CRS36 | 93"         | 2362 | 65"         | 1651 | 30"         | 762 |
| CR42              | CRS42 | 100"        | 2540 | 71"         | 1803 | 30"         | 762 |
| CR48              | CRS48 | 105"        | 2667 | 77"         | 1955 | 30"         | 762 |
| CR54              | CRS54 | 112"        | 2844 | 83"         | 2108 | 30"         | 762 |

### Stationary Electro Magnets

| Model  | Magnet Size | Distance For 1/2" Nut | Power (watts) | Magnetic Intensity (gs) | Height (in) (mm) |     | Belt Speed (fpm) | Motor Size (hp) | Weight (lbs) (kg) |      |
|--------|-------------|-----------------------|---------------|-------------------------|------------------|-----|------------------|-----------------|-------------------|------|
| CRS 36 | 36" x 42"   | 20"                   | 5,400         | 760 @12"                | 20"              | 508 | NA               | NA              | 4,200             | 1900 |
| CRS 42 | 42" x 48"   | 20"                   | 6,500         | 860 @12"                | 23"              | 584 | NA               | NA              | 4,600             | 2100 |
| CRS 48 | 48" x 54"   | 20"                   | 8,400         | 960 @12"                | 24"              | 609 | NA               | NA              | 5,400             | 2500 |
| CRS 54 | 54" x 60"   | 20"                   | 10,000        | 1,080 @12"              | 26"              | 660 | NA               | NA              | 6,200             | 2800 |



Trio Engineered Products, Inc. 128 Schabarum Avenue • Irwindale, CA 91706

Ph: (626) 851-3966 • Fx: (626) 851-9526 Web: [www.trioproducts.com](http://www.trioproducts.com) Email: [info@trioproducts.com](mailto:info@trioproducts.com)