



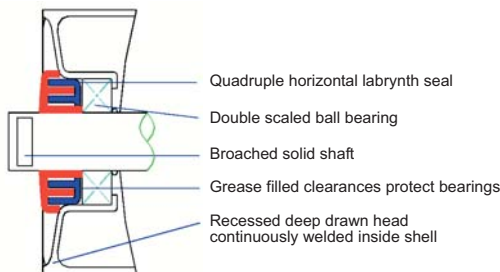
# ICC - 5" TYPE C IDLERS

Engineers and Manufacturers of Washing, Vibrating and Crushing Equipment

## Description



ICC idlers offer exceptional value with proven reliability and quality. All idlers meet CEMA specifications, have heavy duty frames and mutable labyrinth seals. Designed especially for medium duty aggregate applications.



## Features

- "Industry preferred" recessed end disk, eliminates roll to end disc separation.
- Grease filled deep labyrinth seal helps eliminate contaminants within the bearing.
- Exterior shield provides a barrier to divert contaminants away from bearing cavity.
- Factory lubricated
- Precision ground lifetime ball bearings with positive lip contact seals
- 20 mm shaft exceeds Cema C standards
- Fully complies with Cema idler criteria
- Ridged, self cleaning, welded steel frame
- Heavy duty rollers
- Heavy duty center and end stands
- All ICC idlers come backed with a one year warranty

## Additional Features

- "Sealed for Life" design
- Labyrinth seal arrangement
- Head welded inside shell
- Stamped center and end brackets
- Precision deep drawn head
- Maximum 3/8" roll gap
- 20mm 6304 Ball Bearings
- Meets CEMA C load ratings
- Meets CEMA C dimensional criteria
- Broached shaft to add frame stability
- Belt widths 24" through 48" (belt width + 9" mounting)
- 20° and 35° troughing rolls
- Return idlers w/ drop and riser brackets

## Available Widths

- 24"    - 36"    - 48"
- 30"    - 42"

## Other Considerations

- One Year Warranty
- Quick Deliveries
- Off-the-shelf parts
- Nationwide distribution
- Superior Quality
- Low Price Guarantee

Distributed by:



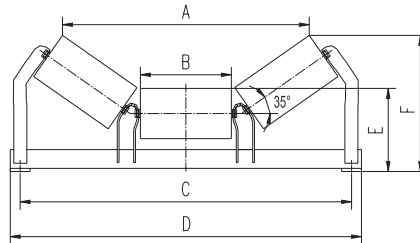
Trio Engineered Products, Inc. 128 Schabarum Avenue • Irwindale, CA 91706

Ph: (626) 851-3966 • Fx: (626) 851-9526 Web: www.trioproducts.com Email: info@trioproducts.com



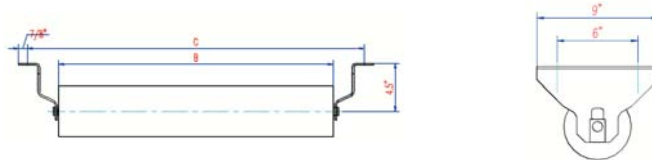
# ICC - 5" TYPE C IDLERS

Engineers and Manufacturers of Washing, Vibrating and Crushing Equipment



## ICC - 5" Type C Idlers

Belt Width (")	Idler Number	Idler Weight (lbs)	A	B	C	D	E	F
24	C35-24	46	24 1/2	9	33	35	8 3/8	13 1/2
30	C35-30	53	29 7/8	11	39	41	8 9/16	15
36	C35-36	58	35 1/8	13	45	47	8 9/16	16 1/8
42	C35-42	68	41 3/8	15	51	53	8 9/16	17 1/2
48	C35-48	75	52	17	57	59	8 9/16	18 3/4
24	C20-24	43	27 1/8	9	33	35	8 3/8	11 1/2
30	C20-30	52	32 7/8	11	39	41	8 9/16	12 1/2
36	C20-36	57	38 9/16	13	45	47	8 9/16	13 1/8
42	C20-42	64	45 3/8	15	51	53	8 9/16	14
48	C20-48	70	52	17	57	59	8 9/16	14 7/8



Belt Width (")	Idler Number	Idler Weight (lbs)	B	C
24	CR-24	24	24	33
30	CR-30	28	28	39
36	CR-36	32	32	45
42	CR-42	36	36	51
48	CR-48	40	40	57
60	CR-60	48	48	63



Trio Engineered Products, Inc. 128 Schabarum Avenue • Irwindale, CA 91706

Ph: (626) 851-3966 • Fx: (626) 851-9526 Web: [www.trioproducts.com](http://www.trioproducts.com) Email: [info@trioproducts.com](mailto:info@trioproducts.com)