



BLADE MILL WASHER

Up to 720 TPH

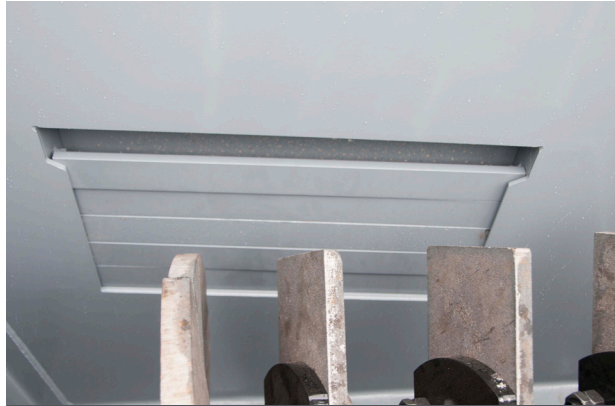
- Long and short tub lengths allows for additional scrubbing and **more effective conditioning** of clay and conglomerates. ■
- Bolt-on, heavy-duty A532 shoes can be adjusted for **years of additional service life**. ■
- Motors, drive parts and pillow block bearings are **standard, off-the-shelf components** for easy replacement. ■
- Increases screening efficiency** by up to 15%. ■



FEATURES



A532 PADDLES



ADJUSTABLE OVERFLOW GATE



HEAVY-DUTY FRAME W/LIFT POINTS



SLINGER PROTECTS LOWER BEARING



EASY ACCESS TO DRAIN AND FILL



GUARDED DRIVE SYSTEM

DEWATERING SCREW

- Single or twin models
- Heavy-duty paddle design for maximum scrubbing
- Flights and paddle bases are protected with adjustable A532 wear shoes and paddles
- Extended shaft and slinger protects lower bearing from water leakage

DRIVE SYSTEM

- Electrical 3-phase, 60Hz, 460V motor; can also be configured to match local power requirements, if necessary
- Shaft-mounted gear reducer
- Belt and guarding

WASH BASIN

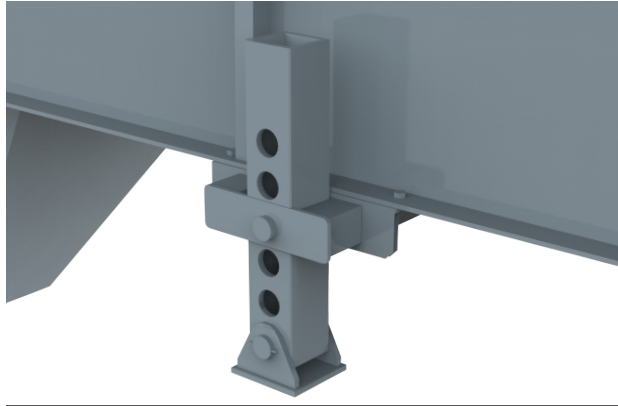
- Adjustable overflow gates
- Heavy-duty skid frame
- Lifting points
- Drain for easy clean out

OPTIONS



OVERFLOW TROUGH

- DISCHARGE CHUTE
- OVERFLOW TROUGH



ADJUSTABLE SUPPORT LEGS

- DISCHARGE SCREEN
- HYDRAULIC DRIVE



PROTECTIVE GUARDING

- CLEAN-OUT DOORS FOR BELLY PAN
- SUPPORT LEGS FROM 2°-10°

- ADJUSTABLE SUPPORT LEGS
- GUARDING

IN-STOCK PARTS



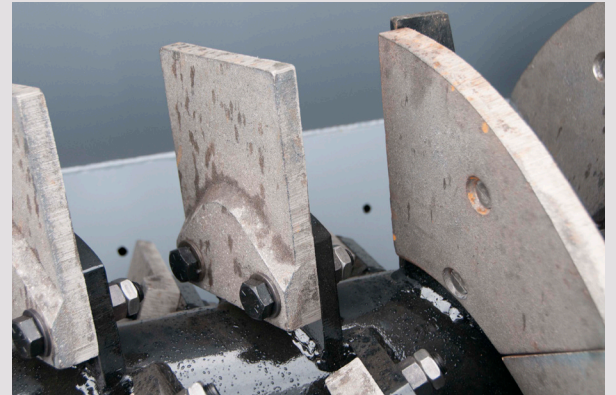
WEAR SLEEVE AND LOWER SEAL

- STAINLESS STEEL WEAR SLEEVE
- HEAVY-DUTY RUBBER LOWER SEAL
- HEAVY-WALLED STEEL PIPE SHAFTS



DRIVE COMPONENTS

- RUBBER WEAR SHOES
- PADDLES
- BELLY PANS



A532 PADDLES AND WEAR SHOES

- ELECTRIC OR HYDRAULIC DRIVE COMPONENTS

- LOWER BEARING RETROFIT KITS FOR OTHER MANUFACTURERS' WASHERS

SPECIFICATIONS

BLADE MILL - SINGLE SCREEN						
Size (mm x m)	Estimated TPH (MT)	Operating Angle	RPM	HP (kw)	Maximum Material Size (mm)	Estimated Empty Weight (kg)
24" x 18' (610 x 5)	60 - 110 (55-100)	0° - 8°	35	15 (10)	1.5" (40)	7,000 (3,200)
24" x 24' (610 x 5)	60 - 110 (55-100)	0° - 8°	35	20 (15)	1.5" (40)	7,800 (3,500)
30" x 18' (760 x 5)	100 - 165 (90-150)	0° - 8°	30	20 (15)	2.0" (50)	9,500 (4,300)
30" x 24' (760 x 5)	100 - 165 (90-150)	0° - 8°	30	25 (20)	2.0" (50)	10,600 (4,800)
36" x 18' (915 x 5)	150 - 250 (135-225)	0° - 8°	30	25 (20)	3.0" (75)	11,000 (5,000)
36" x 28' (915 x 10)	150 - 250 (135-225)	0° - 8°	30	30 (22)	3.0" (75)	14,000 (6,400)
44" x 20' (1,120 x 5)	200 - 335 (180-300)	0° - 8°	26	30 (22)	3.5" (90)	15,000 (6,800)
44" x 32' (1,120 x 10)	200 - 335 (180-300)	0° - 8°	26	50 (35)	3.5" (90)	19,500 (8,800)
48" x 24' (1,220 x 5)	220 - 360 (200-325)	0° - 8°	24	50 (35)	3.5" (90)	21,500 (9,800)

BLADE MILL - TWIN SCREEN						
Size (mm x m)	Estimated TPH (MT)	Operating Angle	RPM	HP (kw)	Maximum Material Size (mm)	Estimated Empty Weight (kg)
30" x 18' (760 x 5)	120 - 220 (110-200)	0° - 8°	30	(2) 25 (20)	2.0" (50)	14,000 (6,400)
30" x 24' (760 x 5)	120 - 220 (110-200)	0° - 8°	30	(2) 20 (15)	2.0" (50)	19,300 (8,800)
36" x 18' (915 x 5)	200 - 330 (180-300)	0° - 8°	30	(2) 25 (20)	3.0" (75)	17,000 (7,700)
36" x 28' (915 x 10)	200 - 330 (180-300)	0° - 8°	30	(2) 30 (20)	3.0" (75)	23,100 (10,500)
44" x 20' (1,120 x 5)	400 - 670 (360-610)	0° - 8°	26	(2) 30 (20)	3.5" (90)	28,000 (12,700)
44" x 32' (1,120 x 10)	400 - 670 (360-610)	0° - 8°	26	(2) 50 (35)	3.5" (90)	36,700 (16,650)
48" x 24' (1,220 x 5)	440 - 720 (400-650)	0° - 8°	24	(2) 50 (35)	3.5" (90)	45,000 (20,400)



DIAMOND
diamondequip.com