



AGGRE-SPEC™ CLASSIFYING SYSTEM

Up to 12' x 48'

- Groundbreaking, **user-friendly computer controls** blends a higher quality product with highest product output. ■
- High pressure hydraulics for the **fastest control response time**. ■
- Weir to weir measurements equal the **largest tank design** for the highest capacities in the industry. ■
- Diverse collection of stationary, semi-portable and portable designs to meet **specific application requirements**. ■

HIGHLIGHTS



1/ **AR LINED FEEDBOX:** High quality, abrasion resistant liners withstand sandblasting like pressure of slurry mixture.

2/ **VALVE BRIDGE:** An elevated design prevents splashing from deteriorating this valuable component.

3/ **HYDRAULIC TUBING:** Standard stainless steel hydraulic lines accommodate highest pressures for fastest valve response time.

4/ **HYDRAULIC TANK:** Centered along the valve bridge, this high-capacity, water-cooled tank creates consistent pressure.

5/ **RECIRCULATING PUMP:** Recycles water from tank overflow to supply rising current cells. No fresh water required.

6/ **WEAR PARTS:** Urethane valves, seats and discharge elbows combine high wear life with effective sealing.

7/ **COLLECTING BLENDING FLUME:** High capacity, AR lined component allows for creating up to three products. Optional: urethane liners.

8/ **RISING CURRENT CELLS:** Increases yield by constantly removing misplaced particles from the coarse end of tank.



DIAMOND
diamondequip.com

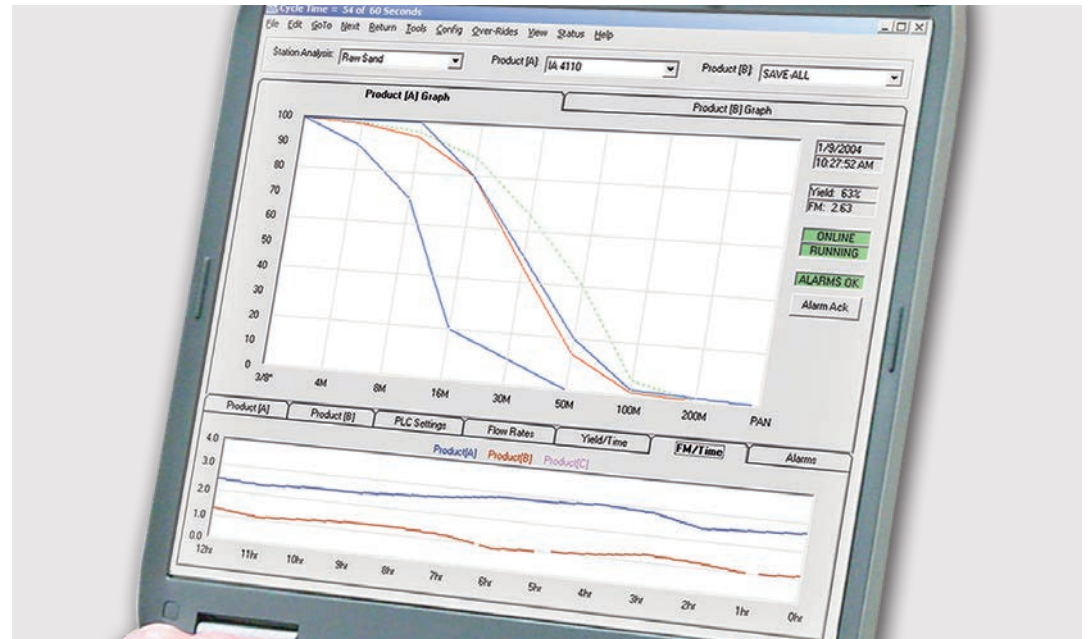
AGGRE-SPEC™ CONTROL SYSTEM

AGGRE-SPEC III

- Three-method calculations, delivers consistent 2% (up to 15%) more productivity than single-method programs
- Re-blends up to 2-spec products simultaneously
- Holds tight product specs and reduces out-of-spec material
- Unlimited mix design storage capacity
- Microsoft Windows-based control system is familiar and easy to use
- Displays and tracks real time fineness modulus (FM) and yield graphs
- Stockpile analysis checks finished product against expected product and input settings
- Retrofits to other manufacturers' tanks
- Collects and reports data including FM, yield, feed and output gradations
- Automatic programmable tank cleanout
- Dual tank controls (Patented)

AGGRE-SPEC I

- Simple intuitive control system
- 10 recipes of two products for 20 product capacity
- Ideal for quarry operations
- Quick start-up
- Automatic programmable tank cleanout
- Alarm history
- Retrofits to other manufacturers' tanks



AGGRE-SPEC III - COMPUTER INTERFACE



AGGRE-SPEC III - INDICATOR PANEL



STATIONARY CLASSIFIERS

FEATURES

- Single or double tanks
- AR lined, triple collecting blending flume
- Valve bridge with railings
- AR lined feed box
- Hydraulic power pack
- Electric motor, 3 phase, 60Hz, 230/460
- Urethane valves, seats and discharge elbows
- Access valves from walkway on control bridge
- Valve and grate allow for a full range of rising current
- Urethane discharge valves and seats are self-aligning
- Urethane discharge elbows for extended life
- Optional custom-designed support structures and screen tower



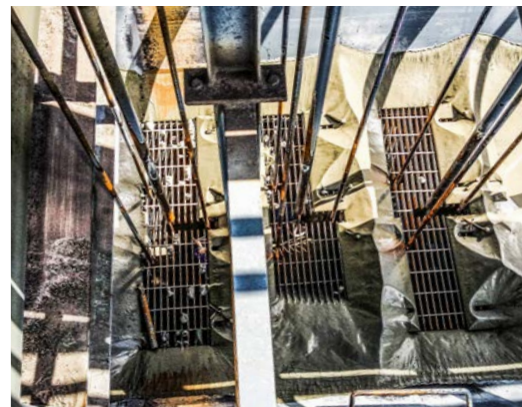
CLASSIFYING TANK WITH STAIRWAY



ACCESS VALVES



URETHANE DIRECTION DISCHARGE BOOTS WITH AR LINED FLUME



VALVE AND GRATE



URETHANE DISCHARGE VALVES

STATIONARY CLASSIFIER SPECIFICATIONS

STATIONARY CLASSIFIER - SINGLE TANK					
Tank Size (m)	Stations	Estimated Weight (kg)	Weight (kg)*	Weight (kg)**	Weight (kg)***
8' x 20' (2 x 6)	6	12,000 (5,443)	7,140 (3,239)	10,540 (4,781)	12,440 (5,643)
8' x 24' (2 x 7)	7	14,000 (6,350)	7,540 (3,420)	10,940 (4,962)	12,840 (5,824)
8' x 28' (2 x 9)	8	16,000 (7,258)	7,700 (3,493)	11,300 (5,126)	13,000 (5,897)
8' x 32' (2 x 10)	9	18,000 (8,165)	8,580 (3,892)	12,860 (5,833)	14,180 (6,432)
10' x 24' (3 x 7)	7	18,000 (8,165)	8,500 (3,856)	11,900 (5,398)	13,800 (6,260)
10' x 28' (3 x 9)	8	20,000 (9,072)	8,700 (3,946)	12,300 (5,579)	14,000 (6,350)
10' x 32' (3 x 10)	9	24,000 (10,886)	9,600 (4,355)	13,700 (6,214)	15,200 (6,895)
10' x 36' (3 x 11)	10	28,000 (12,701)	10,600 (4,808)	14,900 (6,759)	16,500 (7,484)
10' x 40' (3 x 12)	11	30,000 (13,608)	12,100 (5,489)	16,800 (7,620)	18,000 (8,165)
12' x 48' (4 x 15)	11	44,000 (19,958)	16,800 (7,620)	22,000 (9,979)	23,600 (10,705)

*Support Structure: One Chute

**Support Structure: Walkway, Ladders and One Chute

***Support Structure: Walkway, Stairs and One Chute

STATIONARY CLASSIFIER - DOUBLE TANK					
Tank Size (m)	Stations	Estimated Weight (kg)	Weight (kg)*	Weight (kg)**	Weight (kg)***
10' x 32' (3 x 10)	9	48,900 (22,181)	22,500 (10,206)	28,800 (13,064)	30,300 (13,744)
10' x 36' (3 x 11)	10	53,000 (24,040)	24,000 (10,886)	31,100 (14,107)	32,700 (14,833)
10' x 40' (3 x 12)	11	56,000 (25,401)	26,000 (11,793)	34,000 (15,422)	35,200 (15,967)
12' x 48' (4 x 15)	11	86,000 (39,009)	38,000 (17,237)	46,900 (21,274)	48,200 (21,863)

*Support Structure: One Chute

**Support Structure: Walkway, Ladders and One Chute

***Support Structure: Walkway, Stairs and One Chute



SEMI-PORTABLE CLASSIFIERS

WITH FINE MATERIAL WASHER FEATURES

- Two individual dewatering screws for producing two complete separate products or can be combined for the maximum production of a primary product
- Flights are protected with adjustable 1" thick rubber wear shoes
- Extended shaft and slinger protects lower bearing from water leakage
- Plant prewired for easy start-up
- Flush-back nozzle enhances dewatering efficiency
- Adjustable weir plates fine tune overflow water
- Drain for easy clean out
- Skidded modular design

WITH AGGRE-DRY DEWATERING WASHER FEATURES

- Dewatering screen
- Dual electric vibrators
- Urethane screen plates and liners



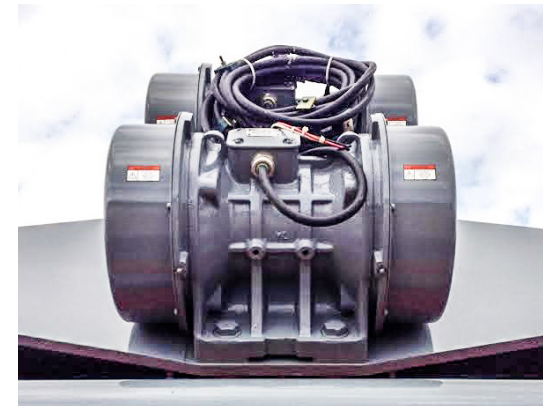
RETRACTABLE VALVE BRIDGE FOR TRAVEL



TWIN DEWATERING SCREWS



SLINGER PROTECTS LOWER BEARING



DUAL ELECTRIC VIBRATORS



URETHANE SCREENS AND LINERS



8% MOISTURE CONTENT

SEMI-PORTABLE CLASSIFIER SPECIFICATIONS

SEMI-PORTABLE CLASSIFIER WITH FINE MATERIAL WASHER - TRIPLE FLUME							
Tank Size (m x m)	Screw Size (mm xm)	Stations	TPH (MT)	Water Capacity - gpm (m ³ /sec)			Estimated Weight (kg)
				100M	150M	200M	
8' x 32' (2 x 10)	Twin 44" x 32' (1,118 x 10)	9	350 (318)	3,500 (0.2)	1,800 (0.1)	950 (0.1)	60,000 (27,216)
10' x 32' (3 x 10)	Twin 44" x 32' (1,118 x 10)	9	350 (318)	4,700 (0.3)	2,400 (0.2)	1,250 (0.1)	64,500 (29,257)
10' x 36' (3 x 11)	Twin 44" x 32' (1,118 x 10)	10	350 (318)	5,300 (0.3)	2,700 (0.2)	1,400 (0.1)	67,000 (30,391)
10' x 40' (3 x 12)	Twin 44" x 32' (1,118 x 10)	11	350 (318)	5,900 (0.4)	3,000 (0.2)	1,500 (0.1)	68,000 (30,844)
10' x 40' (3 x 12)	Twin 54" x 35' (1,372 x 11)	11	480 (436)	5,900 (0.4)	3,000 (0.2)	1,500 (0.1)	97,000 (43,999)
10' x 40' (3 x 12)	Twin 66" x 35' (1,676 x 11)	11	720 (653)	5,900 (0.4)	3,000 (0.2)	1,500 (0.1)	132,000 (59,874)
12' x 48' (4 x 15)	Twin 44" x 32' (1,118 x 10)	11	350 (318)	8,100 (0.5)	4,200 (0.3)	2,150 (0.1)	91,000 (41,277)
12' x 48' (4 x 15)	Twin 54" x 35' (1,372 x 11)	11	480 (436)	8,100 (0.5)	4,200 (0.3)	2,150 (0.1)	116,000 (52,617)
12' x 48' (4 x 15)	Twin 66" x 35' (1,676 x 11)	11	720 (653)	8,100 (0.5)	4,200 (0.3)	2,150 (0.1)	150,000 (68,039)
12' x 48' (4 x 15)	Twin 72" x 35' (1,829 x 11)	11	820 (744)	8,100 (0.5)	4,200 (0.3)	2,150 (0.1)	175,000 (79,379)

SEMI-PORTABLE CLASSIFIERS SPECIFICATIONS (CONTINUED)

SEMI-PORTABLE CLASSIFIER WITH AGGRE-DRY® DEWATERING WASHER

Tank Size (m x m)	Screw Size (mm)	Stations	TPH (MT)	Water Capacity - gpm (m ³ /sec)			Estimated Weight (kg)
				100M	150M	200M	
8' x 24' (2 x 7)	Twin 36" A (914)	7	200 (181)	2,800 (0.2)	1,400 (0.1)	800 (0.1)	54,000 (24,494)
8' x 28' (2 x 9)	Twin 36" A (914)	8	200 (181)	3,200 (0.2)	1,600 (0.1)	900 (0.1)	56,000 (25,401)
8' x 32' (2 x 10)	Twin 36" A (914)	9	200 (181)	3,500 (0.2)	1,800 (0.1)	950 (0.1)	62,500 (28,350)
10' x 28' (3 x 9)	Twin 36" A (914)	7	200 (181)	3,500 (0.2)	1,800 (0.1)	950 (0.1)	64,000 (29,030)
10' x 32' (3 x 10)	Twin 36" A (914)	8	200 (181)	4,100 (0.3)	2,100 (0.1)	1,100 (0.1)	65,000 (29,483)
10' x 36' (3 x 11)	Twin 36" A (914)	9	200 (181)	4,700 (0.3)	2,400 (0.2)	1,250 (0.1)	65,500 (29,710)
10' x 40' (3 x 12)	Twin 36" A (914)	10	200 (181)	5,300 (0.3)	2,700 (0.2)	1,400 (0.1)	72,500 (32,885)
8' x 32' (2 x 10)	Twin 48" A (1,219)	9	400 (363)	3,500 (0.2)	1,800 (0.1)	950 (0.1)	78,000 (35,380)
10' x 32' (3 x 10)	Twin 48" A (1,219)	9	400 (363)	4,700 (0.3)	2,400 (0.2)	1,250 (0.1)	82,500 (37,421)
10' x 36' (3 x 11)	Twin 48" A (1,219)	10	400 (363)	5,300 (0.3)	2,700 (0.2)	1,400 (0.1)	85,000 (38,555)
10' x 40' (3 x 12)	Twin 48" A (1,219)	11	400 (363)	5,900 (0.4)	3,000 (0.2)	1,500 (0.1)	86,000 (39,009)
10' x 40' (3 x 12)	Twin 66" A (1,676)	11	600 (544)	5,900 (0.4)	3,000 (0.2)	1,500 (0.1)	140,000 (63,503)
12' x 48' (4 x 15)	Twin 48" A (1,219)	11	400 (363)	8,100 (0.5)	4,200 (0.3)	2,150 (0.1)	109,000 (49,442)
12' x 48' (4 x 15)	Twin 60" A (1,524)	11	600 (544)	8,100 (0.5)	4,200 (0.3)	2,150 (0.1)	158,000 (71,668)



FULLY PORTABLE CLASSIFIERS FEATURES AND SPECIFICATIONS

FEATURES

- Air brakes
- Running lights
- Hydraulic leveling jacks
- Fifth wheel hitch
- Classifier must be removed for highway travel
- Prewired design for easy start-up



QUICK SET-UP AND DISMANTLE

FULLY PORTABLE CLASSIFIER WITH FINE MATERIAL WASHER - TRIPLE FLUME								
Tank Size (mm x m)	Screw Inches (mm xm)	Stations	Tons (Tonnes/Hour)	Water Capacity - gpm (m ³ /sec)			Estimated Weight (kg)	Axles/Tires
				100M	150M	200M		
8' x 24' (2 x 7)	Twin 36" x 25' E (914 x 8)	7	200 (181)	2,800 (0.2)	1,400 (0.1)	800 (0.1)	50,000 (22,680)	2/8
8' x 24' (2 x 7)	Twin 36 A-D (914 x 8)	7	200 (181)	2,800 (0.2)	1,400 (0.1)	800 (0.1)	64,000 (29,030)	2/8
8' x 28' (2 x 9)	Twin 36" x 25' E (914 x 8)	8	200 (181)	3,200 (0.2)	1,600 (0.1)	900 (0.1)	51,000 (23,133)	2/8
8' x 28' (2 x 9)	Twin 36 A-D (914)	8	200 (181)	3,200 (0.2)	1,600 (0.1)	900 (0.1)	65,000 (29,484)	2/8
8' x 32' (2 x 10)	Twin 36" x 28' (914 x 9)	9	200 (181)	3,500 (0.2)	1,800 (0.1)	950 (0.1)	52,000 (23,587)	2/8
8' x 32' (2 x 10)	Twin 36 A-D (914)	9	200 (181)	3,500 (0.2)	1,800 (0.1)	950 (0.1)	68,000 (30,844)	2/8
8' x 32' (2 x 10)	Twin 44" x 32' (1,118 x 10)	9	350 (318)	3,500 (0.2)	1,800 (0.1)	950 (0.1)	73,500 (33,339)	3/12
8' x 32' (2 x 10)	Twin 48 A-D (1,219)	9	400 (363)	3,500 (0.2)	1,800 (0.1)	950 (0.1)	91,500 (41,504)	3/12
10' x 28' (3 x 9)	Twin 44" x 32' (1,118 x 10)	8	350 (318)	4,100 (0.3)	2,100 (0.1)	1,100 (0.1)	81,000 (36,741)	3/12
10' x 28' (3 x 9)	Twin 48 A-D (1,219)	8	400 (363)	4,100 (0.3)	2,100 (0.1)	1,100 (0.1)	99,000 (44,906)	3/12
10' x 28' (3 x 9)	Twin 44" x 32' (1,118 x 10)	9	350 (318)	4,700 (0.3)	2,400 (0.2)	1,250 (0.1)	86,000 (39,009)	3/12
10' x 28' (3 x 9)	Twin 44" x 32' (1,118 x 10)	10	350 (318)	5,300 (0.3)	2,700 (0.2)	1,400 (0.1)	88,000 (39,916)	3/12
10' x 28' (3 x 9)	Twin 44" x 32' (1,118 x 10)	11	350 (318)	5,900 (0.4)	3,000 (0.2)	1,500 (0.1)	95,000 (43,091)	3/12

OPTIONS



RISING CURRENT PUMP

- UPPER WALKWAY
- COLLECTION BLENDING FLUME WALKWAY
- LADDERS
- STAIRS



WALKWAY TO ACCESS BLENDING FLUME

- METERING BINS
- METERING BIN CONTROLS
- URETHANE LINED COLLECTION BLENDING FLUME
- A532 OR URETHANE WEAR SHOES



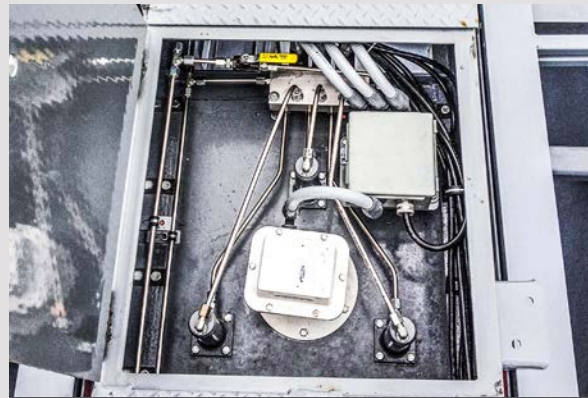
DISCHARGE CHUTE

- DISCHARGE CHUTE
- GUARDING
- RISING CURRENT PUMP

IN-STOCK PARTS



WEAR SLEEVE AND LOWER SEAL



VALVES



RUBBER WEAR SHOES

- INPUT OR OUTPUT MODULES
- BINDICATOR
- HYDRAULIC FILTER
- VALVES
- WEAR SHOES
- LOWER SEAL
- WEAR SLEEVE
- DRIVE COMPONENTS

- VIBRATOR GREASE



DIAMOND
diamondequip.com

© / Superior Industries / 06.2014