

MASABA



www.masabainc.com

Truck Unloader

Side Dump Truck Unloader - Stationary or Skid Mounted

Hopper and Frame

- Heavy Duty Steel Tubing Frame
- 7'9" x 40' Hopper
 - 3/8" Steel with AR 400 Wear Liners
- 30 Cubic Yard Struck Capacity
- 4' Hopper Back and End Side Boards
 - 1/4" plate
- 11'6" Dump Height

36" x 52' Conveyor

- 12" Channel Straight Frame
- **(2) 40 hp 1800 rpm Motors**
- Dual Head End Drive
- (2) Dodge TXT #926 Reducers
- CEMA Rated Idlers
- 3 Ply Belting with Vulcanized Splice
- Belt Scraper

Features

- (1) Coat 2 part Urethane Primer
- (1) Coat 2 part Urethane Paint
- Steel Shot Blasted
- Appropriate Guarding
- Owner's manual for start-up and maintenance

Options

- (2) Intraflo Lube System
- Switchgear
 - NEMA 4 Enclosure
 - Variable Frequency Drive
 - 100' Lead Cord

STRENGTH
YOU
CAN **DEPEND** On!

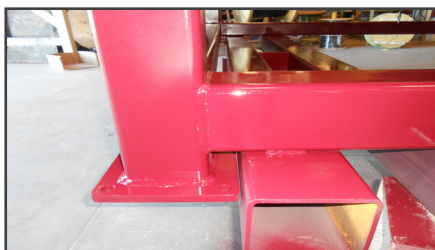
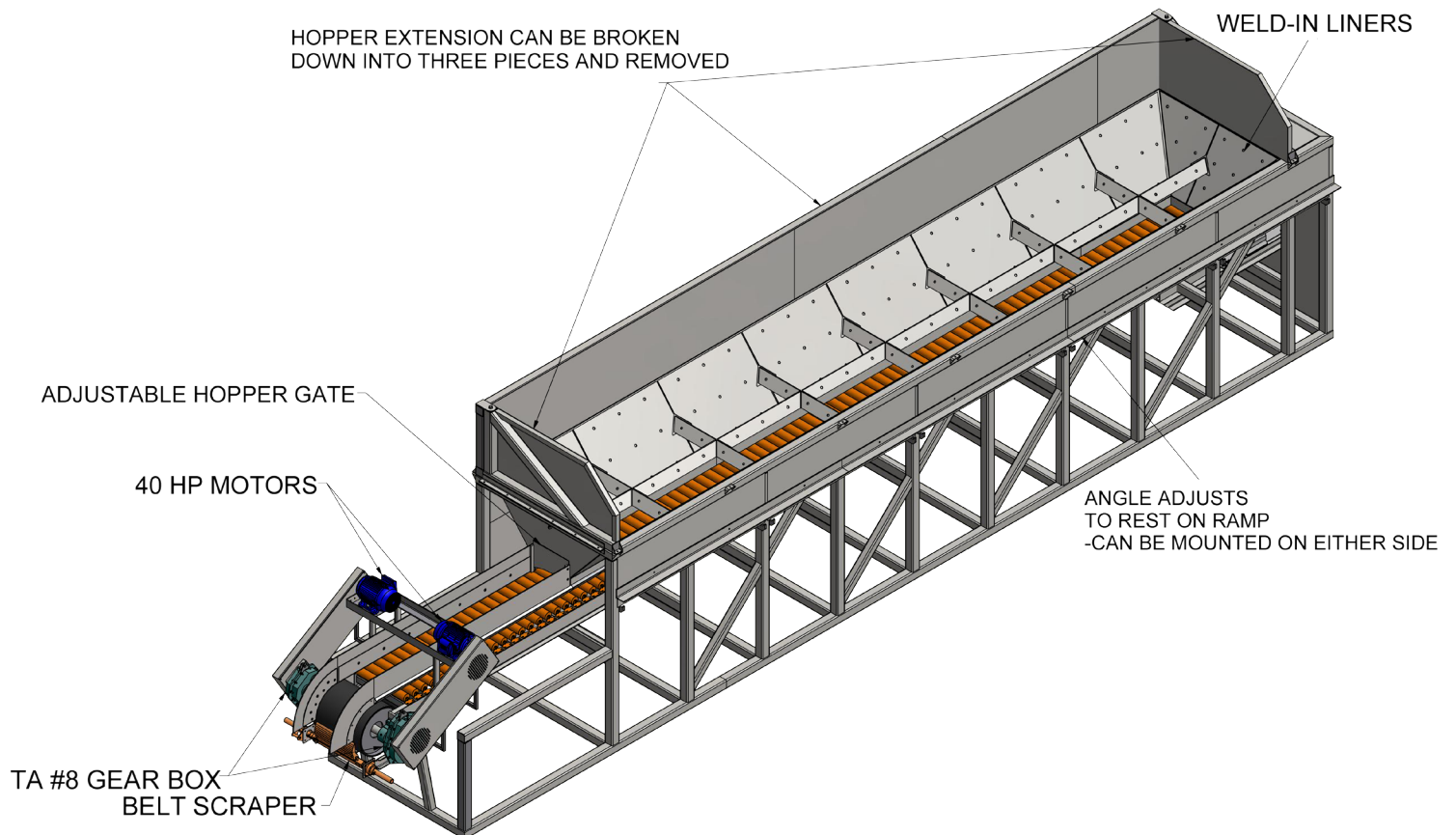
MASABA

1617 317th Street - PO Box 345, Vermillion, South Dakota 57069 USA, www.masabainc.com, 877-627-2220 or 605-624-9555

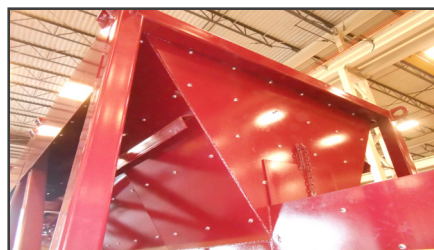
MASABA Stationary or Skid-Mounted Side Dump Truck Unloader

BENEFITS OF MASABA

Masaba has removed the need for dumping material on the ground with the Side Dump Truck Unloader. This stationary or skid mounted unit features a 40' Hopper built from 3/8" AR steel positioned over a 36" x 52' Feed Conveyor to increase efficiency by reducing the number of times your material needs to be handled. 4' Hopper Back and Side Boards will remove spillage while feeding this unloader in high volumes of material.



Heavy Duty Steel Tubing Frame



3/8" AR Steel Hopper



Dual 40 hp Motors
Dodge TXT #926 Reducers



MASABAinc.com
1-877-627-2220
info@MASABAinc.com

REVISION December 2014

NOTE: SPECIFICATIONS ARE SUBJECT TO CHANGE WITHOUT NOTICE: Because MASABA, Inc. may use in its catalog & literature, field photographs of its products which may have been modified by the owners, products furnished by MASABA, Inc. may not necessarily be as illustrated therein. Also continuous design progress makes it necessary that specifications be subject to change without notice. All sales of the products of MASABA, Inc. are subject to the provisions of its standard warranty. MASABA, Inc. does not warrant or represent that its products meet any federal, state, or local statutes, codes, ordinances, rules, standards or other regulations, including OSHA and MSHA, covering safety pollution, electrical, wiring, etc. Compliance with these statutes and regulations is the responsibility of the user and will be dependent upon the area and the use to which the product is put by the user. In some photographs, guards may have been removed for illustrative purposes only. This equipment should not be operated without all guards attached in their normal position. Placement of guards and other safety equipment is often dependent upon the area and the use to which the product is put. A safety study should be made by the user of the application, and, if required, additional guards, warning signs and other safety devices should be installed by the user, wherever appropriate before operating the products.